

# How to connect to the USB Wi-Fi Adapter?

Our Wi-Fi adapter have dual bands. One is 2.4ghz at 150mbps, another is 5ghz at 433Mbps.

If you want to get a 5Ghz signal, please make sure your router is dual band, and keep your Wi-Fi adapter and router are in the same room without obstacles.

Here is the brief instruction:

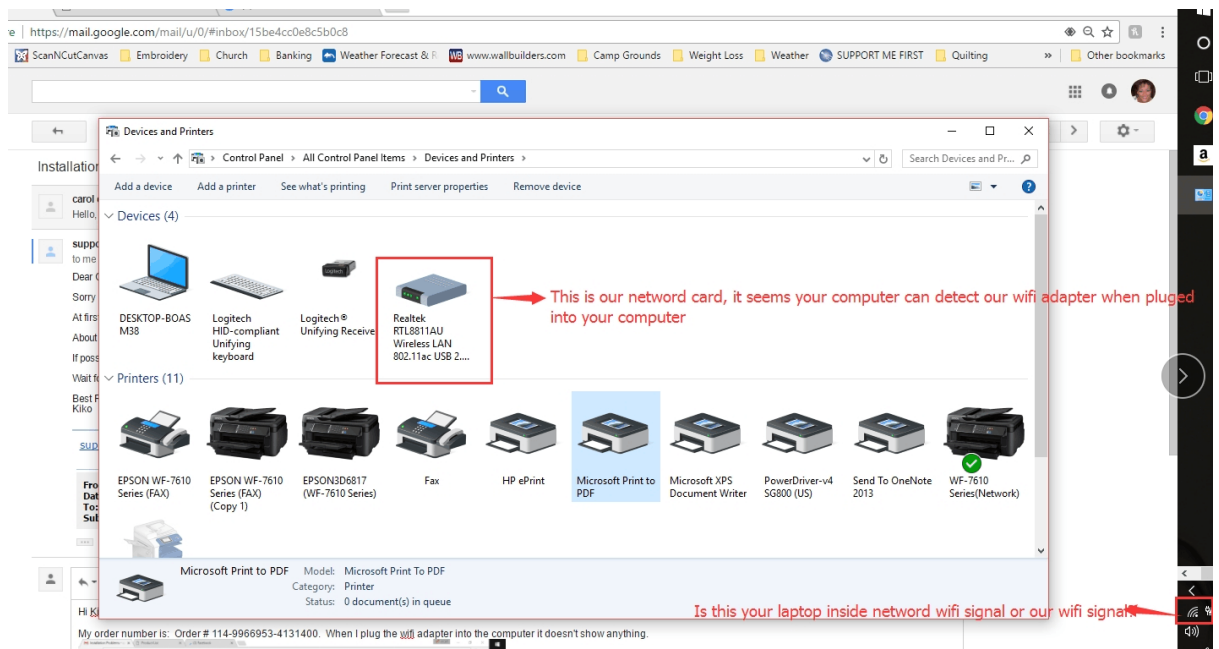
1. Please choose the correct driver according to your PC system firstly. Generally, it is Plug and Play for Win 10. Otherwise, please install the driver as below:

Win7:  <http://bit.ly/windows7-64bit-successfully-installed>

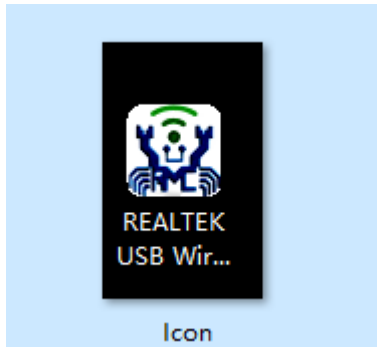
Win 10:  <http://bit.ly/2uwEG9K>

Above Mac 10.9:  <http://bit.ly/2HAW4nn>

2. If not, please untick "Virtual Wifi Allowed", then plug wifi adapter into your computer again like the second picture. Wait for several minutes to make sure your computer can recognise "Realtek RTL8811AU----" in the left top of your icon page.

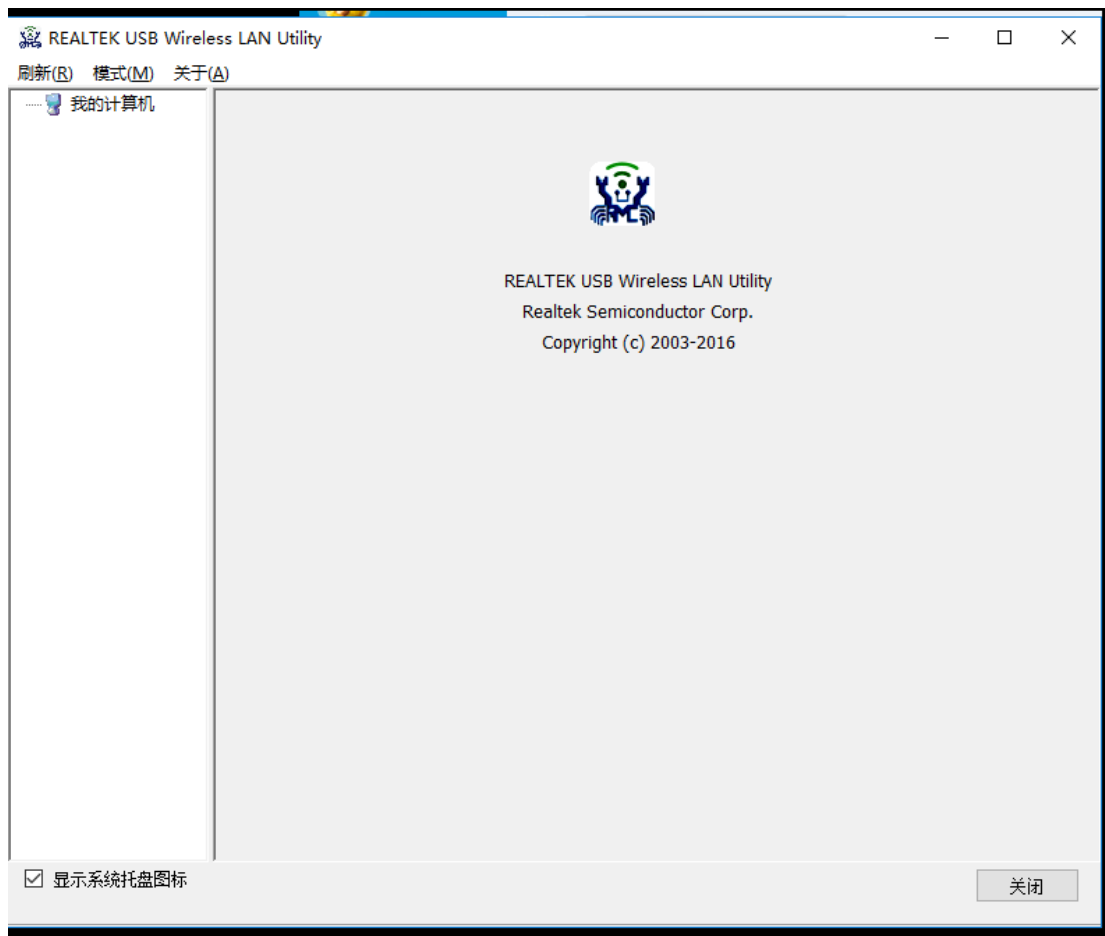


3. Once you install the driver successfully, there will be an icon appear on your computer like the attached.

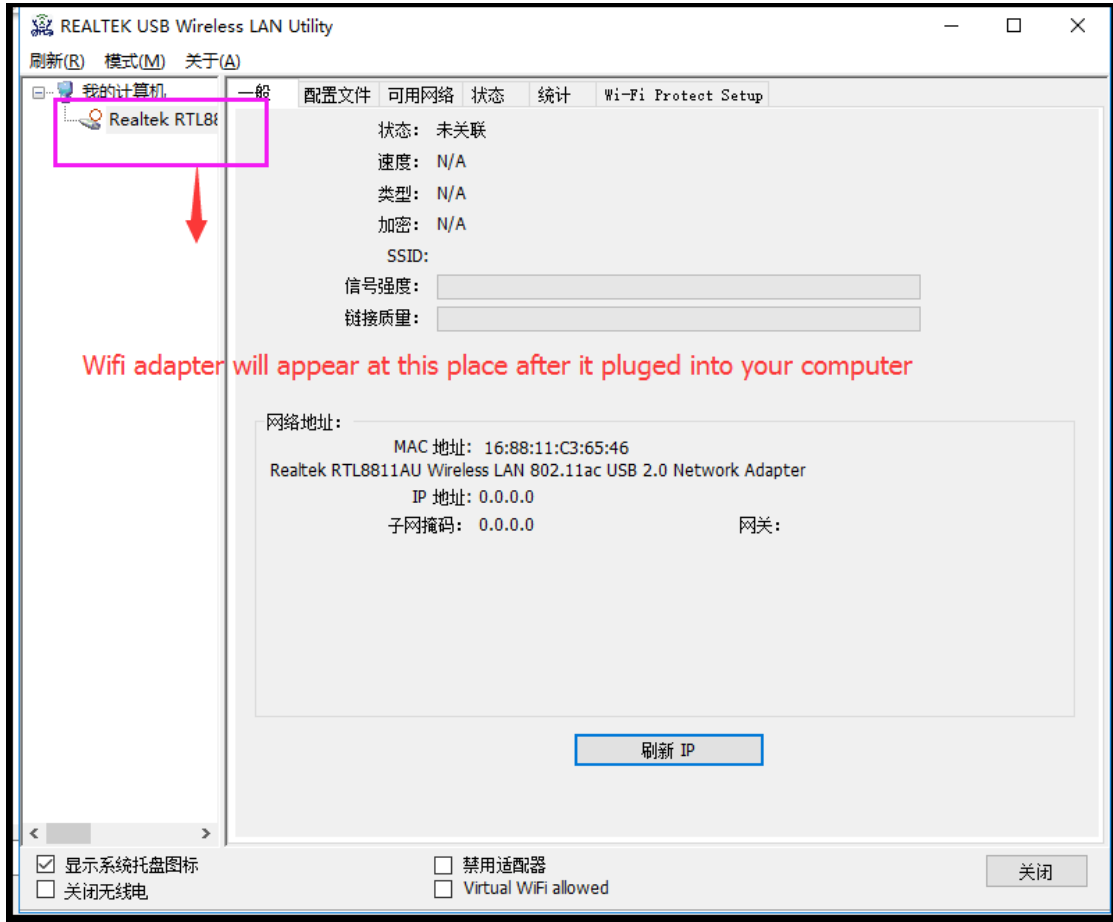


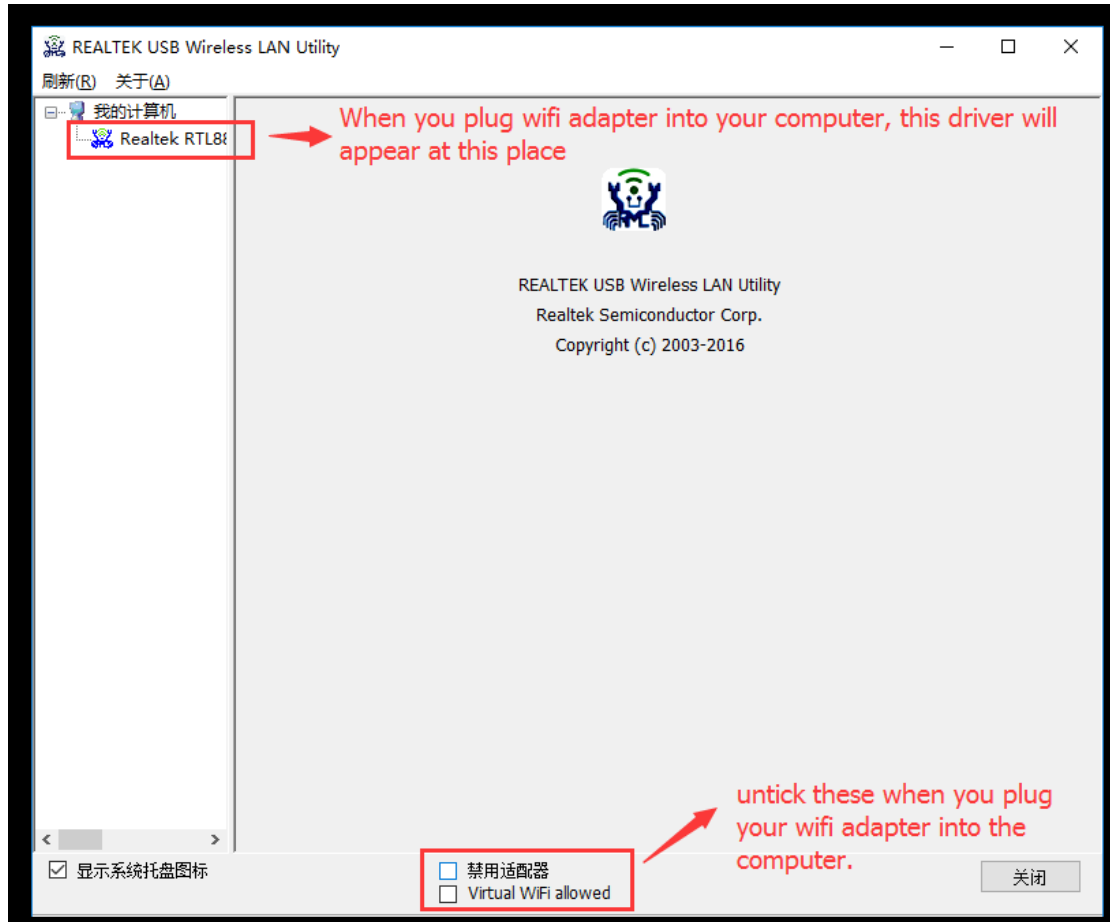
3. Please try to restart your computer and wifi router .

4. Please open the icon like the attached.

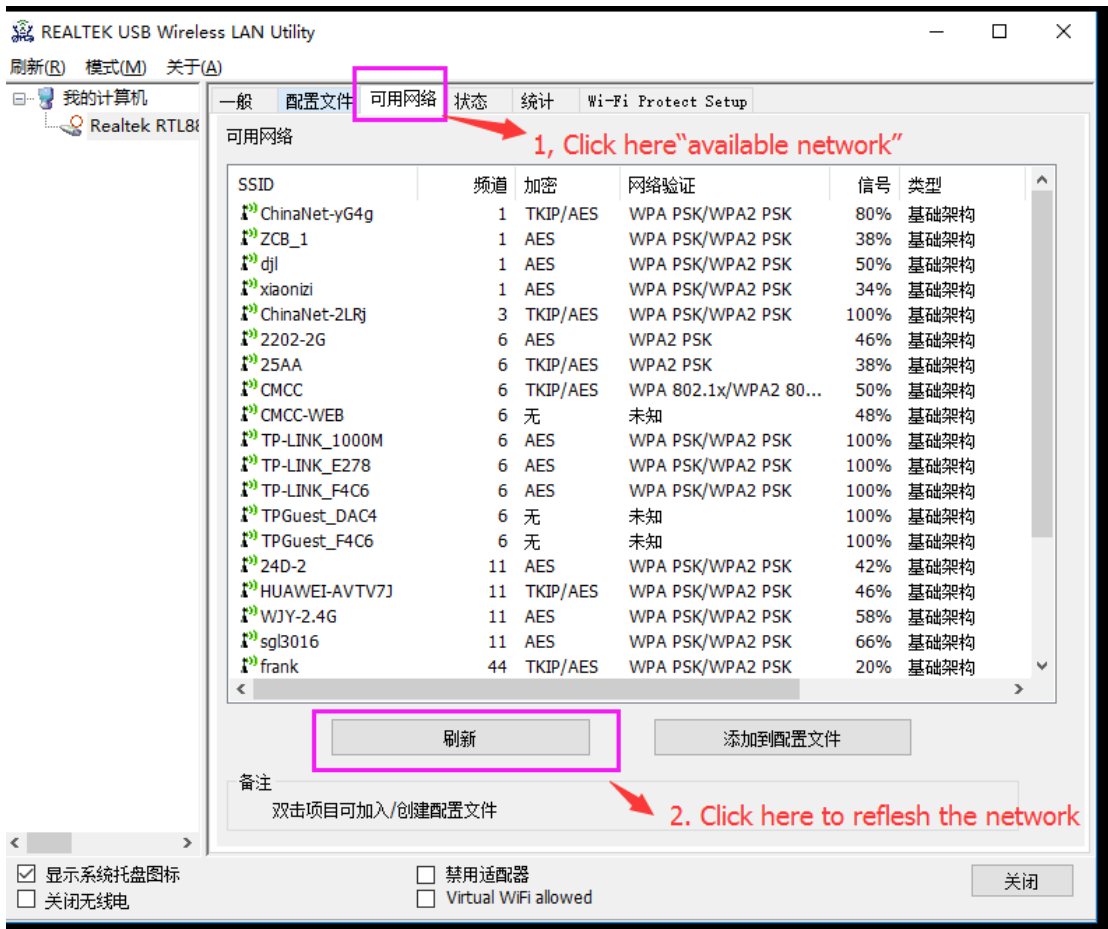


5. Plug wi-fi adapter into your computer, then you will find "Realtak RTL8811AU---" in the left top of this icon page, it means your computer can recognize wi-fi adapter





6. Click "available network" of this icon page, then wait for wifi signal shows, connect one wifi signal and input wifi password that you want from your available network shows.



7. Choose one wifi signal that you want, and input the password, then your computer can connect to internet

我的计算机  
Realtek RTL8

一般 配置文件 可用网络 状态 统计 Wi-Fi Protect Setup

可用网络

SSID	频道	加密	网络验证	信号	类型	BS
ChinaNet-yG4g	1	TKIP/AES	WPA PSK/WPA2 PSK	100%	基础架构	38
TP-LINK_1000M	1	AES	WPA PSK/WPA2 PSK	100%	基础架构	B8
TPGuest_DAC4	1	无	未知	100%	基础架构	BE
default	1	AES	WPA2 PSK	34%	基础架构	6C
HUAWEI-AVTV7J	2	TKIP/AES	WPA PSK/WPA2 PSK	46%	基础架构	80
2202-2G	6	AES	WPA2 PSK	52%	基础架构	F0
CMCC	6	TKIP/AES	WPA 802.1x/WPA2 80...	52%	基础架构	00
CMCC-FREE	6	无	未知	60%	基础架构	00
CMCC-WEB	6	无	未知	58%	基础架构	00
TP-LINK_F4C6	6	AES	WPA PSK/WPA2 PSK	100%	基础架构	34
TPGuest_F4C6	6	无	未知	100%	基础架构	3A
WJY-2.4G	6	AES	WPA PSK/WPA2 PSK	70%	基础架构	B0
yangjingxyy	6	AES	WPA PSK/WPA2 PSK	42%	基础架构	F4
TP-LINK_E278	11	AES	WPA PSK/WPA2 PSK	100%	基础架构	34
cccc	11	TKIP/AES	WPA PSK/WPA2 PSK	46%	基础架构	80
huangwen55	11	TKIP/AES	WPA PSK/WPA2 PSK	38%	基础架构	28
sgl3016	11	AES	WPA PSK/WPA2 PSK	60%	基础架构	C8
frank	44	TKIP/AES	WPA PSK/WPA2 PSK	30%	基础架构	D8
TP-LINK_5G_1000M	149	AES	WPA PSK/WPA2 PSK	100%	基础架构	B8
TP-LINK_5G_F4C6	153	AES	WPA PSK/WPA2 PSK	100%	基础架构	34
TP-LINK_5G_E278	157	AES	WPA PSK/WPA2 PSK	100%	基础架构	34
WJY-5G	161	AES	WPA PSK/WPA2 PSK	30%	基础架构	B0

刷新 添加到配置文件

备注  
双击项目可加入/创建配置文件

显示系统托盘图标  禁用适配器  Virtual WiFi allowed  
 关闭无线电

关闭